

ROVI *maxx*

SOLUTIONS



TABLE OF CONTENTS

ROVI X3/A3 Base Vitals	3
Power Positioning System Overview	3
Non Powered System Overview	3
ROVI X3/A3 Base Overview	4/5
Ultra Low Maxx Power Positioning	6/7
407 Maxx Power Positioning	8/9
MPS Maxx Power Positioning	10/11
UPfront Maxx Power Positioning	12/13
Lateral Tilt Maxx Power Positioning	14/15
Single Post Back Power Positioning	14/15
Mini Maxx Power Positioning	16/17
System Personalization	18/19



Choice is yours

BASE SPECIFICATIONS

BASE VITALS	ROVI A3	ROVI X3
HCPCS Codes	K0856, K0861	K0856, K0861
Suspension System	Active Ride Control (ARC)	Active Ride Control (ARC)
Base Width	25.5"	23.25"
Base Length	36.5"	36.5"
Drive Wheel Size	14"	14"
Caster Wheel Size (front/rear)	6"	6"
Base only Turning Radius	20.5"	19.5"
Drivetrain	4-pole EAD Motors	4-pole EAD Motors
Batteries	2 x M34 3 x M34* 2 x M34 and 1 x M50* (*Option for Vent application)	2x M34 3 x M34* (*option for Vent application)
Battery Charger	8A, Off Board	8A, Off Board
Batteries Weight (each)	38.5 lbs (M34)	38.5 lbs (M34)
Range ⁽¹⁾	17.7 miles	17.7 miles
Weight Capacity	300 lbs	300 lbs
Base Weight (w/o batteries)	159 lbs	157 lbs
Ground Clearance	3"	3"
Maximum Speed	6.2 mph	6.2 mph

⁽¹⁾ Actual driving range and speed may vary due to factors such as user weight, type and grade of terrain, battery condition & charge level; type and condition of the drive wheels, and variations in the drive and control systems.

MAXX POWER POSITIONING OPTIONS

Ultra Low	•	•
407 (Single Pivot Tilt)	•	CALL FOR DETAILS
MPS (Standing)	•	N/A
UPfront (Forward Access)	•	•
Lateral Tilt (Side-to-Side)	•	N/A
Mini (Pediatric)	N/A	•

NON-POWER POSITIONING OPTIONS

Rehab Seat	•	•
Solid Seat Pan	•	•
Captains Seat	•	•

SEATING OPTIONS

All Systems are available with the full range of Invacare® Matrix® Seating Products

BLIZZARD WHITE

MATTE BLACK

SOLAR YELLOW

MOTION GREEN

ORIGINAL ORANGE

BRIGHT BLUE

RED DELICIOUS

PARTY PINK

PURPLE REIGN

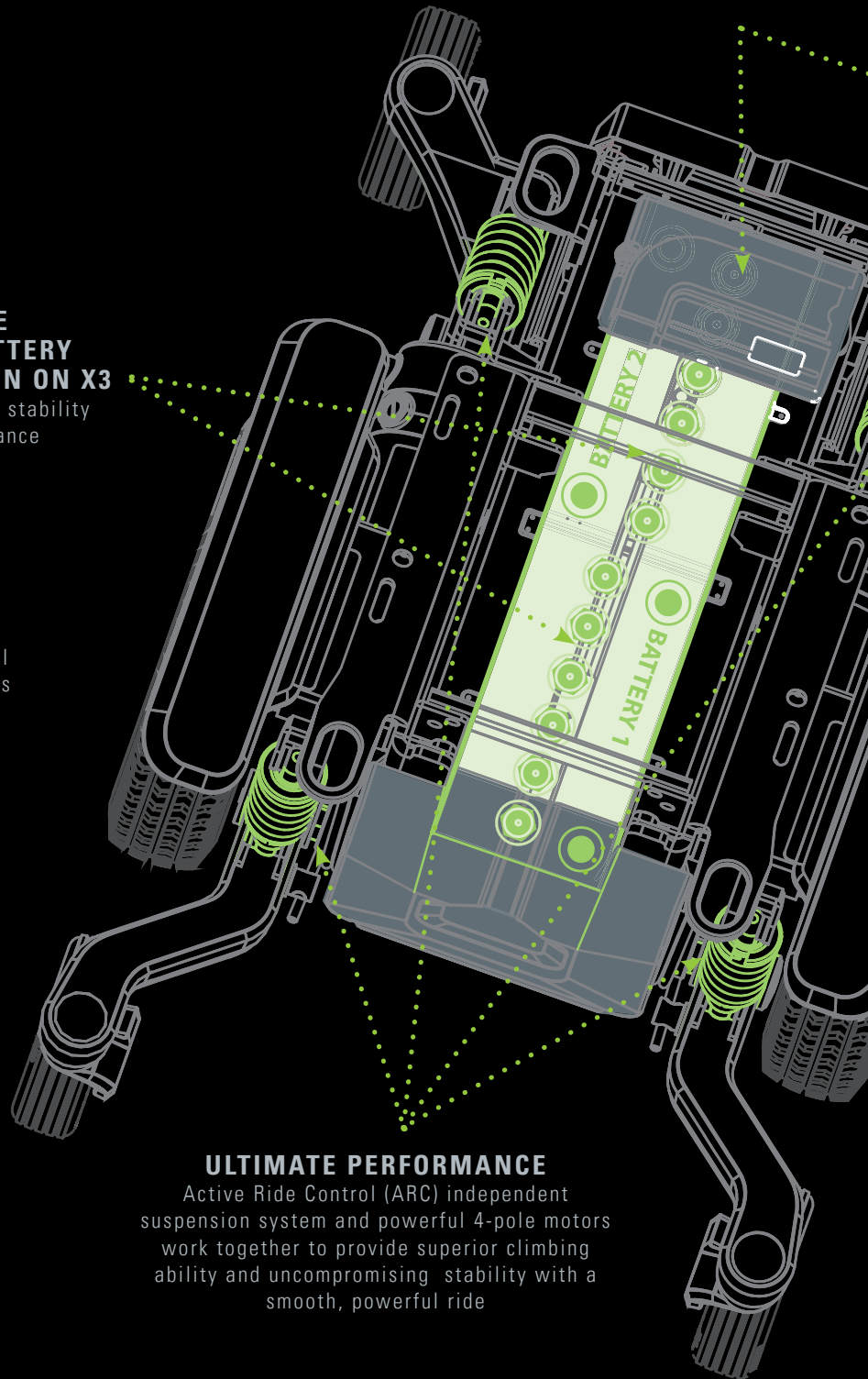
Make an educated decision

**UNIQUE
IN-LINE BATTERY
CONFIGURATION ON X3**
Offers unmatched stability
and performance

OnTraxx

The OnTraxx Enhanced Driving Module decreases the number of user driver control commands to maintain the wheelchair on its intended course when going over uneven or sloping terrain

ULTIMATE PERFORMANCE
Active Ride Control (ARC) independent suspension system and powerful 4-pole motors work together to provide superior climbing ability and uncompromising stability with a smooth, powerful ride





BRAIN POWER

Easily accessible
Drive Control Module

TRANSPORT FRIENDLY

- Single Post Angle Adjustable
Fold Down Back
- 4-Point Tie Down brackets
- EZ Lock & Q'Straint ready

BALANCE

The ROVI's X3 base is the narrowest Group 3 style base. Its unique frame configuration optimizes weight distribution by concentrating the mass through the mid-line of the power base. This revolutionary configuration provides clients with the industry's narrowest power base without sacrificing stability or performance.

CONTROL

ROVI Bases utilize renowned PG Drives Technology. This electronics platform delivers both non-expandable and expandable control options with numerous innovative features. This industry-leading platform was chosen for its performance, reliability and ease of programming.

The ROVI's standard 4-pole motors have been precision matched for peak performance with PG Drives.

The innovative OnTraxx Enhanced Driving Module decreases the number of user driver control commands to maintain the wheelchair on its intended course when navigating uneven or sloping terrain.

EXPERIENCE

- Mid Wheel Drive base delivers compact footprint, ultimate stability, performance & maneuverability in tight spaces
- Precise Driving Experience
- Expertly Handles Uneven Terrain
- Improved Experience via Gyro Technology
- Ideal for clients that utilize a non-proportional input device for drive control, such as a head array or a proximity switch tray
- Faster Acceleration
- Effortlessly climbs curb heights up to 2.5"
- ROVI X3 offers a 1.875" Narrower Footprint
- High Speed Motors: 5.8 mph & 6.2 mph
- Complimentary ROVI USB Charger

SERVICE

- Easily Accessible Drive Control Module
(all electrical connections accessible in rear)
- Motion Concepts Attendant Power Positioning Programmers & Controllers
- Unique Battery Configuration with easy Front & Rear access (while client remains in the chair)
- Totally Accessible Fore-and-aft Adjustment

Assess your needs

More than just another pretty face, the **Ultra Low Maxx** is a real-world solution offering our clients greater independence and accessibility. From basic to the most complex, our highly adjustable and innovative solutions provide unparalleled function, reliability and durability, while maintaining the visual appeal that clients have come to expect from Motion Concepts products. The needs of our clients are constantly changing . . . why shouldn't their power positioning system change with them? Take a closer look and see for yourself why this system is worthy of being called the Maxx!

SPECIFICATIONS: POWER POSITIONING

	ROVI A3	ROVI X3
HCPCS Codes	K0856, K0861	K0856, K0861
Seat Width	14" - 24" (Fully adjustable)	14" - 22" (Fully adjustable)
Seat Depth	14" - 23" (Fully adjustable)	14" - 23" (Fully adjustable)
Seat-to-Floor	as low as 17"	as low as 17"
Weight Capacity	Up to 300 lbs	Up to 300 lbs

CONFIGURATIONS

50° CG Tilt Only	•	•
50° CG Tilt , 170° Recline with ESR*	•	•
50° CG Tilt , 170° Recline with PSB**	•	•
170° Recline Only with ESR*	•	•
170° Recline Only with PSB**	•	•
12" Power Elevating Lift Seat Only	•	• •
ADD-ON MODULES		
Recline Body Fit	•	•
5° Fixed Anterior Assist	N/C	N/C
10° Fixed Anterior Assist	•	•
5° Fixed Pre-Tilt	N/C	N/C
8° Precline	N/C	N/C
30° Precline	•	•
Single Post Angle Adjustable Fold Down Back	•	•
12" Power Adjustable Seat Height	•	•

*ESR Extended Shear Reduction **PSB Synchronized Power Sliding Back

SPECIFICATIONS: NON-POWERED POSITIONING

	ROVI A3	ROVI X3
HCPCS Codes	K0848, K0849	K0848, K0849
Seat Sizes	18" x 18", 20" x 20"	18" x 18", 20" x 20"
Seat-to-Floor	as low as 19"	as low as 19"
Weight Capacity	Up to 300 lbs	Up to 300 lbs

NON-POWERED SYSTEMS

Rehab Seat	•	•
Solid Seat Pan	•	•
Captains Seat	•	•

... little things
make a big difference

MATRIX® SEATING

Full line of award-winning Seating & Positioning Solutions from Pediatric to Heavy-Duty

**MAXX STYLE
ULTRA TRACK**

Integrated t-nut track for easy mounting of lateral thoracic supports and other positioning accessories

**MAXX STYLE
ULTRA RAIL**

Slotted design for mounting of positioning accessories



Make your heart happy

The simple yet effective design of the **407 Maxx - Single Pivot Tilt Power Positioning System** optimizes the geometry of the ROVI bases for maximum stability while providing up to 40° of Posterior Tilt with 7° of Anterior Tilt as a standard configuration. The Anterior Tilt brings the foot platform to rest on the floor while raising the rear seat-to-floor height. Ideal for consumers who have adequate balance and strength to transfer but cannot manage a Flip-up or Swing-away foot plate. With the addition of a Recline (170°) module and LNX Power Articulating Center Mount foot platform, the **407 Maxx** system allows the client to achieve a unique position where their head is below, and their feet are above their heart, which may assist with some respiratory and circulatory conditions in addition to maximizing pressure relief.

SPECIFICATIONS

	ROVI A3	ROVI X3
HCPCS Codes	K0856, K0861	K0856, K0861
Seat Width	14" - 22" (Fully adjustable)	14" - 22" (Fully adjustable)
Seat Depth	14" - 22" (Fully adjustable)	14" - 22" (Fully adjustable)
Seat-to-Floor	as low as 17"	as low as 17"
Weight Capacity	Up to 250 lbs	Up to 250 lbs

CONFIGURATIONS

40° Tilt with 7° Anterior Tilt	•	•
40° Tilt with 7° Anterior Tilt , 170° Recline with ESR*	•	•
ADD-ON MODULES		
Recline Body Fit	•	•
8° Precline	N/C	N/C
30° Precline	•	•
Single Post Angle Adjustable Fold Down Back	•	•
LNX Power Center Mount w/Easy-transfer Footplate	•	•

*ESR Extended Shear Reduction

LNX POWER CENTER MOUNT WITH EASY-TRANSFER FOOTPLATE

-footplate extends and is flush with the floor when chair is in Anterior Tilt position



UNIQUE DESIGN

- Single Pivot Tilt coupled with Recline module allows up to 185° of combined travel
- Ideal for pressure management

7° OF ANTERIOR TILT
-Allows for repositioning and safe forward transfer capability
-Assists with functional activities



Stand up for yourself

The all **NEW MPS Maxx - Modular Power Standing System** is exclusively available on the ROVI A3 base. The innovative, highly adjustable **MPS Maxx** system combines a power standing function with a full range of power positioning options, all in a modular design that provides consumers with a unique combination of independence, function and accessibility. In addition to the enhanced mobility and freedom offered by our MPS Maxx system, the medical benefits of moving to a standing position throughout the day are numerous, including better bone health, greater joint mobility, pain management, enhanced renal/bowel function and decrease risk of pressure injuries.



SPECIFICATIONS

	ROVI A3
HCPCS Codes	K0856, K0861
Seat Width	16" - 21" (Fully adjustable)
Seat Depth	16" - 20" (Fully adjustable)
Seat-to-Floor	as low as 18.5"
Weight Capacity	Up to 250 lbs

CONFIGURATIONS

45° CG Tilt	•
45° CG Tilt , up to 178° Recline with ESR*	•
Power Stand Module for Tilt Only	•
Power Stand Module for Tilt/Recline/ESR	•
ADD-ON MODULES	
7" Power Adjustable Seat Height	•
Belt Drive Center Mount Articulating Foot Platform (BDC)	•

*ESR Extended Shear Reduction

REMOVABLE KNEE BLOCK

- Designed to safely secure the user while standing
- Angle, height & depth adjustable
- Offers 3" of depth, 2" of independent width & 1.5" height adjustments.

OnTraxx ENHANCED DRIVING MODULE

- Standard feature on MPS Maxx system
- Decreases the number of user/driver control commands
- Maintains the wheelchair on its intended course when going over uneven or sloping terrain

Prior to evaluation and use, all consumers MUST consult with a qualified Physician and receive medical clearance and approval to use an assisted standing device. An experienced Occupational Therapist or Physical Therapist should be present during the evaluation and prescription process.

REMOVABLE CHEST BAR

- Height & Angle adjustable
- Designed to safely secure the user while standing
- Angle adjustability to accommodate asymmetries



CHEST STRAP

- Center-pull, push button and adjustable 2-Point padded Chest strap
- height adjustable for anterior and posterior support

PELVIC BELT

- Center-pull, push button and adjustable 2-Point padded lap Belt
- provides anterior positioning support

FORWARD-LOCKING SUSPENSION SYSTEM

- Offers additional stability and safety by locking front suspension arms as the Standing function is engaged



RETRACTABLE KNEE BLOCK MOUNT

STORAGE BRACKET

- Allows the Knee Block to be removed & stowed when standing feature is not being used

Be upfront with yourself

Our **NEW UPfront Maxx** module is designed to integrate with our industry leading Ultra Low Maxx Power Positioning System on the ROVI X3 & A3 power bases. By combining a full Tilt & Recline power positioning system with approximately 7" of Seat Elevation and up to 5.5" of Forward Shift while opening the seat-to-back angle, this system can enhance access to one's environment and improve positioning for performance of daily activities. The **UPfront Maxx** module optimizes space and stability by automatically tucking the user's feet under the front of the seat pan and locking out the front casters, increasing our clients' forward access to previously difficult to reach surfaces and objects.

SPECIFICATIONS

	ROVI A3	ROVI X3
HCPCS Codes	K0856, K0861	K0856, K0861
Seat Width	16" - 22" (Fully adjustable)	16" - 22" (Fully adjustable)
Seat Depth	16" - 23" (Fully adjustable)	16" - 23" (Fully adjustable)
Seat-to-Floor	as low as 17.5"	as low as 17.5"
Weight Capacity	Up to 250 lbs	Up to 250 lbs

CONFIGURATIONS

45° CG Tilt Only with UPfront⁺	•	•
45° CG Tilt , 170° Recline with ESR* with UPfront⁺	•	•
ADD-ON MODULES		
8° Precline	N/C	N/C
30° Precline	•	•

⁺ UPfront Module comes with up to 45° Anterior Tilt, 7" Seat Elevation & Synchronized Leg Mechanism to tuck when in UPfront position

**ESR Extended Shear Reduction*

UPFRONT POSITION

-Allows the system to shift forward up to 5.5" while elevating up to 7" with legs securely tucked under



SYNCHRONIZED LEG MECHANISM

-Standard feature allows the leg to securely tuck under in UPfront position

FORWARD-LOCKING SUSPENSION SYSTEM

-Offers additional stability and safety by locking front suspension arms as the UPfront and Anterior Tilt functions are engaged
-Reduced drive speed in UPfront position



SPEED

-Reduced drive speed in UPfront position

PERFORMANCE

-When system is not in UPfront position the ROVI A3's ARC suspension is fully functioning for maximum performance and climbing capability



ANTERIOR TILT

-Standard feature that offers up to 45° of Anterior Tilt and assists in forward transfers and field orientation

Make a lateral move

Our **Lateral Tilt Maxx** (side-to-side) module is designed to complement traditional positioning solutions such as Tilt, Recline or Tilt/Recline on Ultra Low Maxx Power Positioning System to Tilt Laterally up to 15° in either direction. This feature is effective for gravity assisted postural positioning, can temporarily relieve complications from lateral spinal asymmetries, improve pressure redistribution, and can help alleviate digestive pressure and respiratory issues. From this laterally tilted position, users still retain the ability to tilt posteriorly and/or recline.

SPECIFICATIONS

ROVI A3

HCPCS Codes	K0856, K0861
Seat Width	16" - 20" (Fully adjustable)
Seat Depth	16" - 22" (Fully adjustable)
Seat-to-Floor	as low as 19¼"
Weight Capacity	Up to 225 lbs

CONFIGURATIONS

50° CG Tilt Only	•
170° Recline Only	•
50° CG Tilt, 170° Recline with ESR*	•
50° CG Tilt, 170° Recline with PSB**	•

*ESR Extended Shear Reduction **PSB Synchronized Power Sliding Back

TRANSPORT FRIENDLY

-Back will fold forward for easy transportation in low ceiling vehicles and many small commuter airplanes



BACK OPTIONS

-Offered with our standard steel Rehab Back, Contour Back or with an Interface Plate for use with any of our Matrix backrests



LATCH MECHANISM

-An attendant operated, manual latch mechanism provides back angle adjustments from 73° to 115° in 6° lockable increments



LATERAL TILT

-Offers up to 30° of Posterior Tilt and 170° of Recline while Laterally tilted

BUILT-IN SENSOR

-Allows the seating system to automatically stop when seat is parallel to the base (0° home) position

Venture out into the single scene

Motion Concepts **Single Post Back** is an effective manual positioning solution available on all ROVI bases. Our **Single Post Back** features an integrated latch mechanism which allows quick and easy, tool-free back angle adjustment that also allows the back to be folded down for easy transportation. This design lends an ideal fit for consumers who may require a narrow back support with a wider seat. With the absence of protruding back canes, the **Single Post Back** reduces overall turning radius and provides an understated, streamlined look that clients love.

SPECIFICATIONS

	ROVI A3	ROVI X3
HCPCS Codes	K0856, K0861	K0856, K0861
Seat Width	16" - 20"	16" - 20"
Back Height	21" - 24"	21" - 24"
Seat-to-Floor	as low as 17"	as low as 17"
Weight Capacity	Up to 250 lbs	Up to 250 lbs

CONFIGURATIONS

50° CG Tilt Only	•	•
12" Elevating Lift Seat Only	•	•
Rehab Seat (Non-Power)	•	•

Let kids be kids

Good things come in small packages! The **Ultra Low Mini Power Positioning System** offers power Tilt and Recline systems in 11" – 15" widths and depths. Designed to meet the positioning needs of smaller consumers and available with additional options such as 12" of seat elevation and compatible with the Invacare® **Matrx® Mini Seating Series** cushions and back supports. The **Ultra Low Mini** is offered on the ROVI X3 power base which is known for its unique chassis design and narrow footprint. The ROVI X3's small size performs extremely well in narrow indoor spaces and offers optimum performance and stability for active kids in a variety of outdoor applications. **Together, the Ultra Low Mini Power Positioning System, Matrx® Mini Seating and the ROVI X3** are the ultimate power solution for kids on the go.

SPECIFICATIONS

	ROVI X3
HCPCS Codes	K0856, K0861
Seat Width	11" - 15" (Fully adjustable)
Seat Depth	11" - 15" (Fully adjustable)
Seat-to-Floor	as low as 18.375"
Weight Capacity	Up to 175 lbs

CONFIGURATIONS

50° CG Tilt	•
50° CG Tilt, 163° Recline System with ESR*	•
163° Recline System with ESR*	•
12" Power Elevating Lift Seat Only	•

ADD-ON MODULES

5° Fixed Anterior Assist	N/C
5° Fixed Pre-Tilt	N/C
8° Precline	N/C
30° Precline	•
12" Power Adjustable Seat Height	•

*ESR Extended Shear Reduction





Make it your own

CAPTAINS SEAT OPTION

-Available in Black or Grey
Leatherette trim

DIPPED FENDERS & BATTERY DOORS

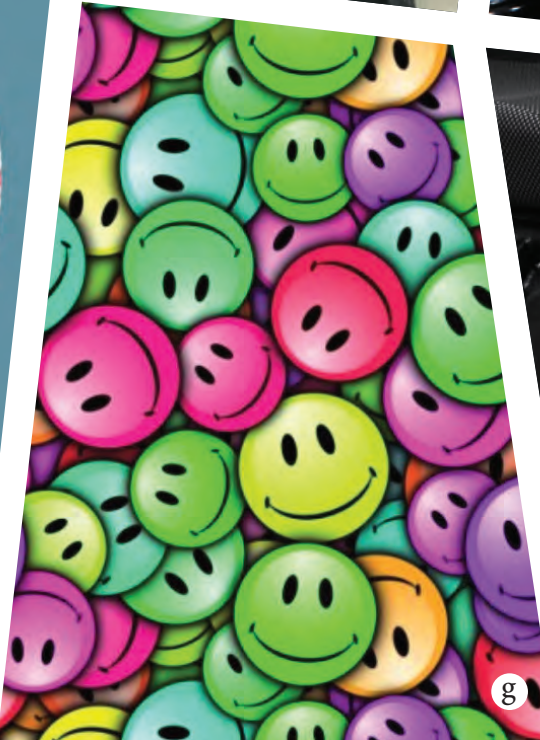


AIRBRUSH DESIGNS

Make it your own . . . customize your fenders and/or battery doors with personalized airbrush or pinstripe design by Bob Rice. (Airbrush a, b & e)

DIPPED DESIGNS

Make it your own . . . personalize your fenders, battery doors, shroud covers, and/or back shell surfaces with hydro dipped personalized theme. Wide variety of hydro dipping patterns to choose from. (Dipped c, d, f, g & h)





Motion Concepts USA
700 Ensminger Rd., Suite 112
Tonawanda, New York 14150
888.433.6818

Motion Concepts CANADA
84 Citation Dr., Unit 1
Concord, ON L4K 1C3
866.748.7943

www.motionconcepts.com
info@motionconcepts.com

© 2019 Motion Concepts. All rights reserved. Trademarks are identified by the symbols ™ and ©. All trademarks are owned by or licensed to Motion Concepts unless otherwise noted. Specifications are subject to change without notification.

TRD0539 Rev A

