



**INVACARE® STORM SERIES®  
3G TORQUE™ SP AND TORQUE™ 3  
POWER WHEELCHAIRS**



Yes, you can.®



# Invacare Storm Series Power Wheelchairs

The **Invacare Storm Series 3G Torque SP and Torque 3 Power Wheelchairs** are designed for people seeking exceptional driving performance, comfort and superior stability in a variety of indoor and outdoor environments.

## Invacare Core Technologies for exceptional driving

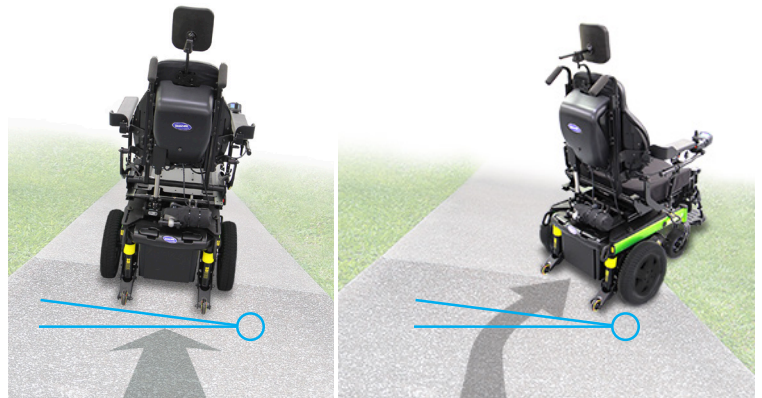
### Rear Wheeldrive (RWD)

- Offers a comfortable ride
- Provides good balance due to the weight being spread more evenly between the front and rear wheels
- Supplies excellent traction under acceleration
- Helps provide stable turning



### G-Trac™ Technology

- Designed to help provide precise tracking for imprecise environments such as side slopes, uneven or soft ground, or even bunched up carpets or door jams
- Designed to reduce the need for corrective steering actions so the driver uses less effort to reach their destination
- Limiting corrective steering can assist in reduction of fatigue, safer driving, increased driving efficiency, enhanced independence, as well as increased energy to perform other daily living activities



G-Trac: On

G-Trac: Off

### MK6i™ Electronics

- Electronics can be programmed to meet individual needs and preferences for powered seating and operation of peripheral devices
- Offers driver-accessible diagnostics capabilities
- Intuitive hand-held programmer offers simple drive programming and setup options



# Power Positioning Choices Tailored to Accommodate Needs from Simple to COMPLEX

ULTRALow  
maxx



## Premium solution for the most clinically complex needs

### Motion Concepts Ultra Low Maxx (ULM) Power Positioning

- Modular system is designed to meet an individual's changing needs
- Up to 50° of CG tilt for efficient pressure relief
- Up to 170° of recline with Extended Shear Reduction (ESR) or Power Sliding Back (PSB) to effectively reduce damaging shear forces and maintain posture
- LNX Power Center Mount Elevating Foot Platform for smooth and effective leg elevation and positioning
- Easy, 'in-clinic' dimensional adjustments to ensure optimal system set-up and performance
- Seat to floor heights as low as 16.75" with up to 12" of seat elevation to assist with essential, daily activities and promote safe transfers

*Motion Concepts' SMART SHIP Program features the ability to order the Invacare Storm Series base, Motion Concepts ULM seating and a full array of ASL options with one order, one invoice.*



*Full line of Invacare® Matrux® Seating, Cushions and Backs available.*

PREMIUM

Call to Order with Motion Concepts Power Positioning **1.888.433.6818** [motionconcepts.com](http://motionconcepts.com)

## Trusted, value solution for reliability and function

### Invacare® Formula™ Power Positioning

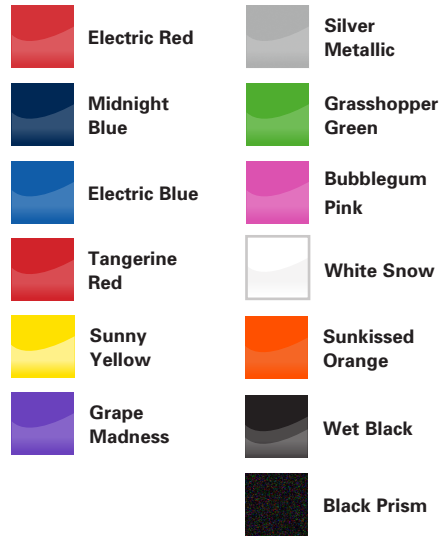
- CG tilt allows the seat to slide forward 7 inches to maintain a constant center of gravity during the tilt cycle
- Rehab (ASBA) seat is adjustable in width and depth
- Up to 170° of recline with Mechanical Shear Management (MSM) maintains consistent positioning and optimally addresses shear forces
- Tilt range 0°-50° or 5°-55°
- Formula systems offer both the Invacare® Contoura™ and Conventional Back styles

*Full line of Invacare Matrux Seating, Cushions and Backs available with Tilt Only systems when ordered with back canes.*

VALUE

Call to Order with Invacare Power Positioning **1.800.333.6900** [invacare.com](http://invacare.com)

# Classic colors for your personal style



COLORS

HCPCS Code: K0848, K0849, K0856, K0861, K0868, K0877, K0884\*



Model #	Base Dimensions	Seat Dimensions	Seat-to-Floor Height
---------	-----------------	-----------------	----------------------

Model #	Base Dimensions	Seat Dimensions		Seat-to-Floor Height		
		Motion Concepts Ultra Low Maxx	Invacare Formula or Rehab Seat	Motion Concepts Ultra Low Maxx	Invacare Formula	Invacare Rehab Seat
3GTQ3, 3GTQ3-CG, 3GTQ3-MCG, 3GTQ3SP, 3GTQ-CG, 3GTQ-MCG,	25.5" W 30" L <i>Short</i> 33" L <i>Long</i>	14"-22" W 14" W or 23" W	16"-22" W 16"-22" D	16.75" 18.25" 19" 20"	18.5" 19.5" 20.5"	17.5" 18.75" 19.75"



Drive Wheels	Ground Clearance	Minimum Base Turning Radius**	Dynamic Incline	Product Weight	Weight Capacity
--------------	------------------	-------------------------------	-----------------	----------------	-----------------

14"	2.4"	33.1" <i>Short</i> 36.2" <i>Long</i>	9°	Up to 364 lb. <i>Short</i> 372 lb. <i>long</i>	300 lb.
-----	------	---	----	--	---------



Motor	Max Speed***	Battery	Battery Range***	Limited Warranty†
4-Pole Sealed Housing	Up to 6.2 mph (Torque SP) Up to 5.9 mph (Torque 3)	Group 24	Approx. 17.8 Miles (Torque SP) Approx. 19 Miles (Torque 3)	5 Years Base Frame 3 Years Formula Seat Frame 1 Year Electronics/Motor/ Gearbox

**Invacare Corporation**  
www.invacare.com

**USA**  
One Invacare Way  
Elyria, Ohio  
44035-4190  
(800) 333-6900

**Canada**  
570 Matheson Blvd. E.,  
Unit 8  
Mississauga, Ontario  
L4Z 4G4 Canada  
(800) 668-5324

**Motion Concepts**  
www.motionconcepts.com

**USA**  
700 Ensminger Rd. Suite 112  
Tonawanda, NY 14150  
(888) 433-6818  
Fax: (888) 433-6834

**Canada**  
84 Citation Dr., Unit 1-7  
Concord, ON L4K 3C1  
(866) 748-7943  
(905) 695-0134  
Fax: (905) 695-0138

©2019  
Invacare Corporation.  
All rights reserved. Trademarks  
are identified by the symbols  
™ and ®. All trademarks  
are owned by or licensed to  
Invacare Corporation unless  
otherwise noted. Specifications  
are subject to change without  
notification.  
Form No. 19-088  
190541

Refer to owner manual for safe driving practices.

\*All references to HCPCS codes. Providers are responsible for determining the appropriate billing codes when submitting claims to the Medicare program, and should consult an attorney or other advisor to discuss specific situations in further detail.

\*\* Nominal dimension varies of seat and front rigging combined.

\*\*\*Actual driving range and speed will vary based on driving and battery conditions.

† Motion Concepts Ultra Low Maxx Limited Warranty: Lifetime Motion Concepts manufactured Structural Components; 2 Years Electronics/Actuators

