

INVACARE® MATRX®
SEATING SERIES
PRODUCT GUIDE



Invacare® Matrx® Seating and Positioning is an established global leader, committed to product innovation, high quality standards and superior product performance. As the world of seating evolves, the Invacare Matrx Seating Series continues to exceed customer expectations.

Call to order

1.800.333.6900
invacare.com

1.888.433.6818
motionconcepts.com



TABLE OF CONTENTS

Pediatric

Cushions

PS Mini	4
PSP Mini	4
Kid*ab*ra Vi	4

Backs

Mini Back	5
Mini Fixed Laterals	5
Mini Swing-away Laterals	5
Mini Chest Harness Interface	5
MiniEXT Hardware	5
MiniFlex Abdominal Support	5
Dipped Back Shell Option	5

Accessories

Elan Mini Headrest	4
--------------------	---

Standard

Cushions

Libra™ / Libra™ Adjust	6
Libra™ Fit Kit	6
PS	7
PSP	7
Vi	7
Stabilite™	7
Flovair™ Gentle/Max Contour	7
Options	8
General Use	8

Backs

Elite™	9
Elite™ Deep	9
Elite™ TR	9
PB	9
PB Deep	9
Hardware	10
Options	10/11
Accessories	11
General Use	8

High Performance

MX2 Back	13
----------	----

Bariatric

Cushions

PS Heavy-Duty	14
Vi Heavy-Duty	14
Libra™ Heavy-Duty/ Libra™ Adjust Heavy-Duty	14
Libra™ Fit Kit	6
Flovair™ Heavy-Duty Gentle/Max Contour	14
Stabilite™ Heavy-Duty	14

Backs

Elite™ Heavy-Duty	15
Elite™ Deep Heavy-Duty	15
Elite™ TR Heavy-Duty	15
PB Heavy-Duty	15
PB Deep Heavy-Duty	15

Accessories

Elan Headrest/Pad Options	16
Arm Pads/Straps/Lap Belts/Trays	17

Quick Product Reference

Quick Product Reference	18/19
-------------------------	-------

INVACARE® MATRIX® MINI CUSHIONS



PS Mini Cushion

HCPCS Code: E2605/E2606

PS Mini Cushion is an exceptionally lightweight cushion designed to provide superior positioning, stability and comfort for our smallest clients. The design features an anatomically contoured shape with a unique waffled ischial relief recess and an innovative reversible outer cover.

Width: 8" - 14"

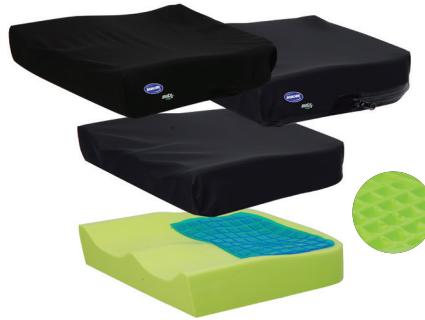
Depth: * 10", 12", 14", 16"

* available for 8"-10" W cushions only

Weight Capacity: 150 lb.

Fabric Options: Kid*ab*ra Meshtex, Blizzard Blue, Pink Lollipop and Black Startex (shown)

Options: Custom Modifications, Cushion Rigidizer, Pelvic Obliquity Kit



PSP Mini Cushion

HCPCS Code: E2607

The Matrix PSP Mini (Posture Seat Polymer) cushion combines the stability and support of the PS foam base with a polymer overlay for extra protection and shear reduction. An ultra-lightweight cushion providing zero maintenance, worry free skin protection and positioning.

Width: 10", 11", 12", 13", 14"

Depth: 10", 12", 14", 16"

Weight Capacity: 150 lb.

Fabric Options: Kid*ab*ra Meshtex, Blizzard Blue, Pink Lollipop and Black Startex (shown)

Options: Custom Modifications, Cushion Rigidizer, Pelvic Obliquity Kit



Kid*ab*ra Vi Cushion

HCPCS Code: E2607/E2608

Kid*ab*ra Vi Cushion is designed to provide skin protection and positioning for individuals at moderate to high risk of skin breakdown. The unique three-part foam construction targets skin protection where it is needed most, and features excellent stability, support and comfort.

Width: 12", 14"

Depth: 12", 14"

Weight Capacity: 150 lb.

Cover Options: Kid*ab*ra Meshtex (shown), Black Meshtex

Options: Custom Modifications, Drop Base, Cushion Rigidizer, Pelvic Obliquity Kit

INVACARE® MATRIX® ELAN HEADREST



new



Elan Mini Headrest

HCPCS Code: E0128/E0955

Compact, lightweight and elegant.

Elan Hardware: Highly adjustable through pivot ball joints and multi-disk locking plates. Tool-less adjustment levers included for easy fitting and position changes. Vertical Post 11" High.

NEW Extended Adjustable Elan hardware with extra link for extended reach.

Pads: Pediatric pad options available, Standard Startex or Infection Control covers; aluminum plates can be formed to shape. Other pad options available on Page 16.



6" x 3.5" Standard Pad



9" x 7" 4 Point Pad

INVACARE® MATRIX® MINI BACK



Mini Back

HCPCS Code: E2615

Contoured for exceptional support and stability and freedom of upper extremity mobility. Mini hardware provides 4" of growth adjustment, infinite positioning options and easy portability.

Width: 10", 11", 12", 13", 14"

Height: 7", 10", 12", 14"

Weight Capacity: 150 lb.

Contour Depth: 3"

Fabric Options: Kid*ab*ra Meshtex (shown); Blizzard Blue, Pink Lollipop and Black Startex

Standard Hardware: Mini-Set Mounting

Hardware (Quick-release latch for easy removal/portability; Fits 1", 7/8" and 3/4" diameter canes; allows back angle/ depth adjustment with child seated in wheelchair)

Options: Swing-away Laterals, Fixed Laterals, Chest Harness Interface, MiniEXTHardware Interface



Mini Fixed Laterals

HCPCS Code: E0956

Padded lightweight aluminum plates provide extra 3" of contour depth.

Pad Size: 4.5" L x 3" H

Fabric Options: Kid*ab*ra Meshtex (shown); Blizzard Blue, Pink Lollipop and Black Startex



Mini Swing-Away Laterals

**HCPCS Code: E0956 (Lateral Pads)
E1028 (Swing-Away Hardware)**

Designed for the Invacare Matrix Mini Back. Installs inside back shell; Does not compromise depth/angle adjustment. Lock/release latch allows pad to swing away for side transfers.

Pad Size: 4.25" L x 3.25" H, 5.25" L x 3.5" H

Fabric Options: Black Startex



Mini Set Hardware

Standard on all Pediatric Elite and Posture Backs. Provides 40° Angle, 4" depth and even rotation adjustment.

Pediatric Cushions/Backs Fabric Options



Pink Lollipop Startex



Blizzard Blue Startex



Kid*ab*ra Meshtex



Black Startex



Chest Harness Interface (HIMINI)

Height adjustable hardware allows attachment of OEM-compliant abdominal supports to the full range of Mini backs.



MiniEXT Hardware

Provides pin mounting location +/- 3.5" for clearance of obstacles on back canes.

new



MiniFlex Abdominal Support

Adjustable in width for Mini backs 10" to 14" wide. Keyhole design for ease of application. Stretch neoprene support designed for comfort and function.

Models: XS: 4.5" H S: 6" H

new



Dipped Back Option

Customize with your child's favorite characters. Variety of patterns to choose from.



INVACARE® MATRX® CUSHIONS

Libra™ Cushion

HCPCS Code: E2624/E2625

Libra™ Cushions are designed with the highest level of skin protection, positioning and adjustability for unique user needs. Contoured HR foam base designed for off-loading and pelvic stability, 3 chamber no maintenance fluid overlay. Recommended for those at highest risk or with existing skin breakdown.

Width: 14", 15", 16", 17", 18", 19", 20"

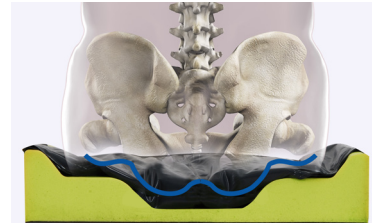
Depth: *12", *14", 16", 18", 20", 22"

* available for 14" W cushions only

Weight Capacity: 300 lb.

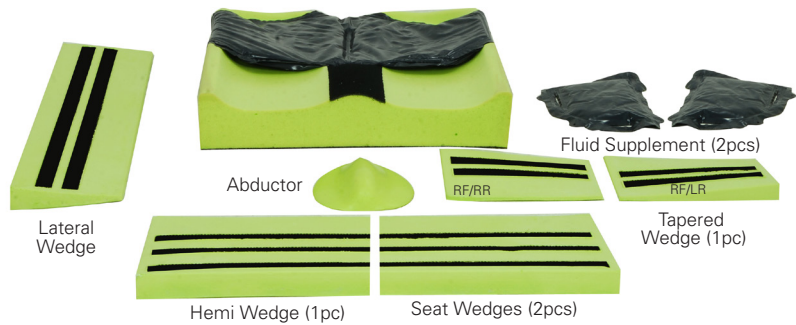
Options: Custom Modifications, Cushion Rigidizer, Pelvic Obliquity Kit, Fit Kit Accessories Custom options available through Motion Concepts only

Cover Options: Startex™ (shown), Spacer Mesh, Infection Control (wipeable)



Libra Fit Kit Accessories

Designed to enhance immersion, correct or accommodate orthopedic issues



Libra Adjust Cushion

HCPCS Code: E2624/E2625

Libra™ Adjust Cushion includes 2 additional Fluid Supplement Packs to create deep contour pelvic well.

Width: 14", 15", 16", 17", 18", 19", 20"

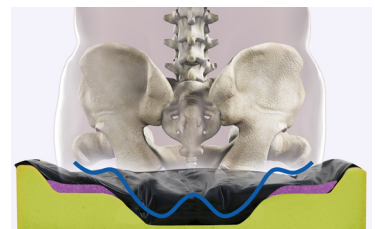
Depth: *12", *14", 16", 18", 20", 22"

* available for 14" W cushions only

Weight Capacity: 300 lb.

Options: Custom Modifications, Cushion Rigidizer, Pelvic Obliquity Kit, Fit Kit Accessories Custom options available through Motion Concepts only

Cover Options: Startex™ (shown), Spacer Mesh, Infection Control (wipeable)





PS Cushion

HCPCS Code: E2605/E2606

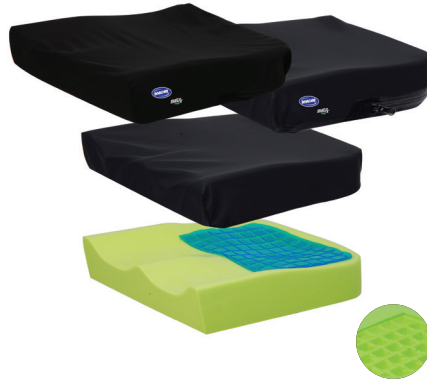
PS Cushion is an exceptionally lightweight cushion designed to provide superior positioning, stability and comfort. The design features an anatomically contoured shape with a unique waffled ischial relief recess and an innovative reversible outer cover. It is a great choice for a very wide range of individual needs.

Width: 14", 16", 17", 18", 20"

Depth: 16", 18", 20", 22"

Weight Capacity: 300 lb.

Options: Custom Modifications, Cushion Rigidizer, Pelvic Obliquity Kit



PSP Cushion

HCPCS Code: E2607

PSP (Posture Seat Polymer) cushion combines the stability and support of the PS foam base with a polymer overlay for extra protection and shear reduction. An ultra-lightweight cushion providing zero maintenance, worry free skin protection and positioning.

Width: 14", 16", 17", 18", 20"

Depth: 16", 18", 20", 22"

Weight Capacity: 300 lb.

Options: Custom Modifications, Cushion Rigidizer, Pelvic Obliquity Kit



Vi Cushion

HCPCS Code: E2607/E2608

Vi Cushion is designed to provide skin protection and positioning for individuals at moderate to high risk of skin breakdown. 3 Layer HR molded foam with viscoelastic pelvic relief zone.

Width: 14", 16", 17", 18", 20"

Depth: *15", *16", 17", 18", 20", 22"

* available for 15W and 17W cushions only

Weight Capacity: 300 lb.

Options: Custom Modifications, Drop Base, Cushion Rigidizer, Pelvic Obliquity Kit



Invacare® Stabilite™ Cushion

HCPCS Code: E2605/E2606

Stabilite Cushion comes standard with an Invacare ThinAir Bladder to assist in redistributing peak pressure away from bony prominences and help manage shear forces. Contoured, slim cushion insert helps eliminate sling upholstery "hammock effect."

Width: 14" - 20"

Depth: 14" - 20"

Weight Capacity: 250 lb.

Options: Custom Modifications, Cushion Rigidizer, Removable Leg Wedges, Pelvic Obliquity Kit



Invacare® Flovair™ Gentle/Max Contour Cushion

HCPCS Code: E2607

Flovair Gentle Contour cushion captures the stability of foam, the pressure redistribution of air and the shear management of fluid all in one hybrid cushion. Zippered inner cover easily wipes clean and allows access for cushion modifications.

Width: 15" - 20"

Depth: 15" - 20"

Weight Capacity: 300 lb.

Options: Custom Modifications, Cushion Rigidizer, Removable Leg Wedges, Pelvic Obliquity Kit

INVACARE® MATRIX® OPTIONS



Cushion & Cover Modifications

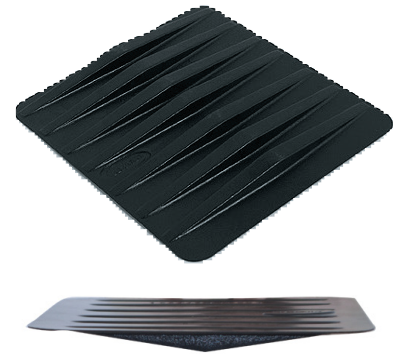
Custom modifications are available to accommodate a variety of orthopedic conditions. Standard modifications include seat width and depth reductions, as well as leg length discrepancies. (Additional lead time required)



Pelvic Obliquity Kit (2 pcs)

Designed to accommodate up to 1° obliquities. Can be readily modified and installed onto the following cushions:

Vi and Kid*ab*ra Vi Cushions; PS Cushions; PSP Cushions; Flovair Cushions; Stabilite Cushions



Cushion Rigidizers

Lightweight plastic seat insert fits between seat rails for level support and eliminates hammock effect of sling seat upholstery. Securely fitted to bottom of foam cushion inside the cushion cover.

INVACARE® GENERAL USE



Invacare® Comfort-Mate Extra Cushion

HCPCS Code: E2603/2604

Width: 14" - 22"

Depth: 14" - 20"

Weight Capacity: 250 lb.



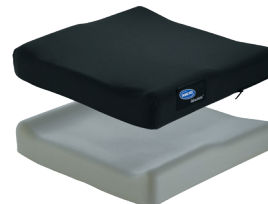
Invacare® Single Density Cushion

HCPCS Code: E2601/2602

Standard Width: 10" - 24"

Standard Depth: 7" - 20"

Weight Capacity: 250 lb.



Invacare® Absolute™ Cushion

HCPCS Code: E2601

Standard Width: 16", 18", 20"

Standard Depth: 16", 18"

Weight Capacity: 250 lb.



Invacare® Versair™ Back

HCPCS Code: E2611/2612

Standard Width: 16" - 21"

Standard Depth: 15" - 17", 17" - 19"

Weight Capacity: 300 lb.

Heavy-Duty Width: 21" - 26"

Heavy-Duty Depth: 15" - 17", 17" - 19"

Weight Capacity: 500 lb.

INVACARE® MATRX® BACKS

Standard



Elite™ Back

HCPCS Code: E2620

Elite Back utilizes a contoured aluminum back shell with scapular cutout. MeshTex cover and foam overlap back shell for comfort and protection.

Width: 14" - 20"

Height: 10", 12", 14", 16", 18", 20"

Weight Capacity: 300 lb.

Contour Depth: 3"

Standard Hardware: Easy Set

Hardware Options: Extended Range Hardware, Split Hardware, Fixed Space Saver*, Heavy-Duty Easy Set



Elite™ Deep Back

HCPCS Code: E2620

Elite Deep Back designed with extra contour depth for those requiring more midline support.

Width: 14" - 20"

Height: 10", 12", 14", 16", 18", 20"

Weight Capacity: 300 lb.

Contour Depth: 6"

Standard Hardware: Easy Set

Hardware Options: Extended Range Hardware, Split Hardware, Fixed Space Saver*, Heavy-Duty Easy Set



Elite™ TR Back

HCPCS Code: E2620

Elite TR Back is ideal for Tilt or Tilt/Recline applications. Back shell formed to include shoulder support and SuperSoft foam for extra immersion & comfort.

Width: 15", 16", 17", 18", 19", 20"

Height: 16", 18", 20"

Weight Capacity: 300 lb.

Contour Depth: 3"

SuperSoft Foam: (Dual layer foam pad with 1" super-soft foam laminated to 1" firm HR foam)

Standard Hardware: Easy Set

Hardware Options: Extended Range Hardware, Split Hardware, Fixed Space Saver*, Heavy-Duty Easy Set



PB Back

HCPCS Code: E2615

Elite PB Back utilizes an ABS Shell with molded HR foam. Gently contoured shape with full wraparound upholstery.

Width: 14", 16", 17", 18", 20"

Height: 12", 16", 20"

Weight Capacity: 300 lb.

Contour Depth: 5"

Standard Hardware: Easy Set

Hardware Options: Extended Range Hardware, Split Hardware, Fixed Space Saver*, Heavy-Duty Easy Set



PB Deep Back

HCPCS Code: E2615

PB Deep Back offers extra deep contour for midline support and stability.

Width: 14", 16", 17", 18", 20"

Height: 12", 16", 20"

Weight Capacity: 300 lb.

Contour Depth: 7"

Standard Hardware: Easy Set

Hardware Options: Extended Range Hardware, Split Hardware, Fixed Space Saver*, Heavy-Duty Easy Set



Easy Set Hardware

Standard on all Elite and Posture Backs.

Provides 40° Angle, 4" depth and

even rotation adjustment.

For other hardware

options refer to Page 10

**Note: This back can be installed on the Invacare® Formula™ CG Tilt/Recline, and Motion Concepts TRx Power Positioning Systems using FSSH*

INVACARE® MATRX® HARDWARE



Mounting Hardware Options

Easy Set (PBMH)

300 lb. weight capacity. Quick release design for easy removal/portability; Allows back angle/depth adjustment with client seated in wheelchair; Compatible with all models of Elite & PB backs.

Split (SMH)

500 lb. weight capacity. Allows clearance of back cane rigidizer bars or other obstacles.

Heavy-Duty Easy Set (HDMH)

500 lb. weight capacity. Included with all Heavy-Duty Back models; Recommended for users with high tone or heavy intended use.

Fixed Space Saver (FSSH)

500 lb. weight capacity. Recommended for power tilt/recline or tighter width applications. Permanent mount requires tool for removal.

Mounting Pins

Standard/Long Mounting Pins: Included with PB and Elite Backs; allows PB Back to fit back canes 1" narrower to 1" wider, and Elite back canes the same width or 1" wider.

Optional Extended Mounting Pins (EMP): Allow interface to wheelchairs up to 2" wider. 300 lb. weight capacity maximum.

INVACARE® MATRX® OPTIONS



Dipped Back Shell Option

Customize Matrix Elite backs with a choice of patterns.



Super-soft Foam Upgrade

1" layer of super-soft foam laminated onto a 1" layer of firmer high resilience foam for increased immersion and added comfort. Available for the following models/sizes:

Invacare Matrix Elite & Elite Deep Backs
Width: 16", 18", 20"
Height: 16", 18", 20"



Visco Foam Upgrade

¾" layer of visco foam laminated onto a 1" layer of high resilience foam for increased immersion and added comfort. Visco upgrade is available on all Invacare Matrix PB back models.



Wipeable Slip Cover

Zippered removable outer slipcover designed for infection control. Easily wiped clean. Available for all Matrix PB and Elite back models.

INVACARE® MATRIX® OPTIONS & ACCESSORIES



U.S. Military Emblems

We salute U.S. Veterans: Air Force, Army, Marine Corps & Navy; Available in a 3" (Sticker) & 6" (Embroidered patch) diameter and affixed to the Matrix Backs:

- PB/PB Deep - 6" embroidered patch
- Elite/MX2 - 3" decal



Fixed Laterals

HCPCS Code: E0956

Designed for Invacare Matrix Elite & Elite Heavy-Duty Backs. Mounting: Installs inside back shell; Does not compromise depth/angle adjustment.

Options: Standard/ Pediatric/Offset (Left or Right)

Sizes:

- Standard 7.5" L x 5" H
- Pediatric 5.5" L x 3" H
- Offset 7.5" L x 5" H



Swing Away Laterals

**HCPCS Code: E0956 (Lateral Pads)
E1028 (Swing-Away Hardware)**

Designed for Invacare Matrix Elite and Elite Heavy-Duty Backs. Mounting: Installs inside back shell; Does not compromise depth/angle adjustment. Lock/release latch allows pad to swing away for side transfers.

Options: Standard or Offset (Left or Right)

Pad Sizes:

- 4.25" L x 3.25" H
- 5.25" L x 3.5" H
- 5.75" L x 3.75" H
- 6.5" L x 4.25" H



Chest Harness Interface for Elite Backs (CHIEB)

Width, height and angle adjustable chest harness interface for precise orientation of shoulder straps.



Chest Harness Interface for PB Backs (CHIPB)

Width adjustable chest harness interface for precise orientation of shoulder straps.



Privacy Flaps (PFLAP)

Available for all models of Invacare Matrix PB, Elite (shown), and the MX2 backs.

Standard Sizes: XS up to XXL,
Fits back with 13" - 24"
Larger sizes available upon request

Standard



2017 AWARD
HARDING
 INNOVATIVE
 PRODUCT
CMC17
 SEATING, MOBILITY AND MORE



INVACARE® MATRX® MX2 BACK



Matrx MX2 Back

HCPCS Code: E2615

Designed for active users who demand the best. Carbon fiber specially engineered to provide unmatched stability for peak performance. Contoured to provide hip/trunk stability and enhance upper extremity mobility and function. Very light weight and aesthetically appealing.

Width: 14", 15", 16", 17", 18"

Height: 6", 9", 12", 16"

Weight Capacity: 250 lb.

Contour Depth: 3"

Hardware Options: Fixed Mount & Quick Release

Solid Carbon Fiber Back Shell construction designed to provide optimal flex and suspension. Shaped for perfect fit and maximum stability. Designed with cutouts for breathability and slots for easy height adjustment.



Fixed Mount



Quick Release



MX2 Deep Laterals

Lightweight aluminum plate. provides extra 3" contour depth for midline support and stability.

Pad Size: 4.5" L x 3" H



Privacy Flaps (PFLAP)

Available for all MX2 back sizes

Hardware Options

Angle, height, depth, width, rotation adjustable for precise orientation. Width adjustable to fit chairs 1" narrower or wider than back model widths.

Fixed Mount – Lightweight, carbon fiber construction, maximum performance for rigid chairs

Quick Release – Easy removal for portability

High Performance

INVACARE® MATRX® HEAVY-DUTY CUSHIONS



PS Heavy-Duty

HCPCS Code: E2605/E2606

PS Cushion is designed to provide superior positioning, stability and comfort. Features a lightweight molded HR foam with waffled pelvic relief area. Inner cover and reversible outer cover (on stock sizes only).

Width: 22", 24", 26" - Stock (up to 30" - Special)

Depth: 18", 20", 22" - Stock (up to 30" - Special)

Weight Capacity: 600 lb.

Options: Custom Modifications, Pelvic Obliquity Kit, Cushion Rigidizer



Vi Heavy-Duty Cushion

HCPCS Code: E2607/E2608

Vi Cushion is designed to provide skin protection and positioning for individuals at moderate to high risk of skin breakdown. Three layer molded foam with pocketed viscoelastic ischial relief zone.

Width: 21" - 30"

Depth: 21" - 26"

Weight Capacity: 600 lb.

Options: Custom Modifications, Pelvic Obliquity Kit



Libra Heavy-Duty Cushion

HCPCS Code: E2624/E2625

Libra™ Cushions utilize contoured HR foam base designed for off-loading and pelvic stability, 3 chamber no maintenance fluid overlay.

Recommended for those at highest risk or with existing skin breakdown.

Width: 21", 22", 23", 24"

Depth: 18", 20", 22"

Weight Capacity: 500 lb.

Options: Startex™ (shown), Spacer Mesh, Infection Control (wipeable)

Options: Fit Kit Accessories Custom options available through Motion Concepts only



Invacare® Flovair™ Heavy-Duty Gentle/Max Contour Cushion

HCPCS Code: E2607/E2608

Flovair Gentle Contour cushion captures the stability of foam, the pressure redistribution of air and the shear management of fluid all in one hybrid cushion.

Width: 21" - 24"

Depth: 16" - 22"

Weight Capacity: 500 lb.

Options: Custom Modifications, Cushion Rigidizer, Removable Leg Wedges, Pelvic Obliquity Kit



Invacare® Stabilite™ Heavy-Duty Cushion

HCPCS Code: E2605/E2606

Stabilite Cushion comes standard with an Invacare ThinAir Bladder to assist in redistributing peak pressure away from bony prominences and help manage shear forces.

Width: 21" - 24"

Depth: 16" - 22"

Weight Capacity: 350 lb.

Options: Custom Modifications, Cushion Rigidizer, Removable Leg Wedges, Pelvic Obliquity Kit



Libra™ Adjust Heavy-Duty Cushion

HCPCS Code: E2624/E2625

Libra™ Adjust Cushion includes 2 additional Fluid Supplement Packs to create deep contour pelvic well.

Width: 21", 22", 23", 24"

Depth: 18", 20", 22"

Weight Capacity: 500 lb.

Options: Startex™ (shown), Spacer Mesh, Infection Control (wipeable)

Options: Fit Kit Accessories Custom options

INVACARE® MATRIX® HEAVY-DUTY BACKS

Bariatric



Elite™ Heavy-Duty Back

HCPCS Code: E2620/E2621

Elite HD Back utilizes reinforced aluminum back shell for Bariatric users.

Width: 21", 22", 23", 24" - Stock (up to 30" - Special)

Height: 16", 20"

Weight Capacity: 500 lb.

Extra Wide PB Heavy-Duty Backs are available up to 30" W x 16" or 20" H

Contour Depth: 3"

Standard Hardware: Heavy-Duty Easy Set

Hardware Options: Fixed Space Saver*



Elite™ Deep Heavy-Duty Back

HCPCS Code: E2620/E2621

Elite Deep HD Back is designed with deep contour for additional midline support and positioning.

Width: 21" - 24"

Height: 16", 18", 20"

Weight Capacity: 500 lb.

Contour Depth: 6"

Standard Hardware: Heavy-Duty Easy Set

Hardware Options: Fixed Space Saver*



Elite™ TR Heavy-Duty Back

HCPCS Code: E2620/E2621

Elite TR HD Back is ideal for Tilt or Tilt/Recline applications. Back shell formed to include shoulder support and SuperSoft foam for extra immersion & comfort.

Width: 21" - 24"

Height: 20"

Weight Capacity: 500 lb.

Contour Depth: 3"

Made with SuperSoft Foam: (Dual density, 1" firm + 1" soft HR foam combination)

Standard Hardware: Heavy-Duty Easy Set

Hardware Options: Fixed Space Saver*



PB Heavy-Duty Back

HCPCS Code: E2615/E2616

PB HD Back utilizes contoured aluminum shell for Bariatric users. Full wraparound upholstery.

Width: 20", 22", 24"

Height: 16", 20"

Weight Capacity: 500 lb.

Extra Wide PB Heavy-Duty Backs are Available up to 30" W x 16" or 20" H

Contour Depth: 5"

Standard Hardware: Heavy-Duty Easy Set

Hardware Options: Fixed Space Saver*



PB Deep Heavy-Duty Back

HCPCS Code: E2615/E2616

PB Deep HD Back offers extra deep contour for midline support and stability.

Width: 20", 22", 24"

Height: 16", 20"

Weight Capacity: 500 lb.

Extra Wide PB Deep Heavy-Duty Backs are available up to 30" W x 16" or 20" H

Contour Depth: 7"

Standard Hardware: Heavy-Duty Easy Set

Hardware Options: Fixed Space Saver*



Heavy-Duty Easy Set Hardware

Standard on all Heavy-Duty Elite and Posture Backs.

Provides 40° Angle,

4" depth and

even rotation adjustment.

For other hardware

options refer to Page 10

**Note: This back can be installed on the Invacare® Formula™ CG Tilt/Recline, and Motion Concepts TRx Power Positioning Systems using FSSH*



INVACARE® MATRX® ELAN® HEADREST



Elan Headrest Hardware

HCPCS Code: E0128

Compact, lightweight and elegant.

Elan Hardware: Highly adjustable through pivot ball joints and multi-disk locking plates. Tool-less adjustment levers included for easy fitting and position changes.

Standard - includes two 3" links

Extended - includes three 3" links



Co-molded Dual Density Foam



Tool-less Adjustment levers



Ergonomic Knob



new



Standard Pad

HCPCS Code: E0955

Covers - Standard (Startex) or Infection Control (reverse Startex).

Pad Sizes:

- 6" Pad: 6"x 3.5"
- 10" Pad: 10" x 5"
- 14" Pad: 14"x 5"



Occipital Pad

HCPCS Code: E0955

Covers - Standard (Startex) or Infection Control (reverse Startex).

Pad Sizes:

- 9" Pad: 9" x 7"
- 12" Pad: 12" x 8"



4 Point Pad

HCPCS Code: E0955

Covers - Standard (Startex) or Infection Control (reverse Startex).

Pad Size:

- Small Pad: 9" x 7"
- Large Pad: 11" x 10"



new

Elan headband

Comfortable neoprene forehead support. Easy keyhole attachment for ease of application. Inside of band includes non-skid surface.

INVACARE® MATRIX® ACCESSORIES



Ergonomic Arm Trough

HCPCS Code: E2209

Molded, ergonomic shape fits the natural arm curve; provides users flexibility of various arm positions Available for left or right side and is 13" x 4.5"; hand pad is optional add-on and is also available for left or right side and is 5" x 4.5"



Multi-Axis Armrest Mount

HCPCS Code: E2209

Allows infinite adjustability of angle and rotation of arm pad or Multi-position arm pads or Arm Trough.



Modular Arm Pads

Durable composite frame features 3 slots for infinite fore and aft adjustability as well as offset mounting.

Available for left or right side and in 2 sizes:

Full length: 14" x 4"

Desk length: 10" x 4"

Available in 2 interchangeable foam inserts:
Visco Foam/Startex and Integral Foam



Gel Arm Pads

Available for left or right side and in 3 sizes:

Narrow: 12" x 2"

Wide: 12" x 3"

Long: 14" x 3.5"



Multi-Position Arm Pad

Available for left or right side and in 2 sizes:

Full length: 14" x 3"

Desk length: 10" x 3"



Bodypoint Padded Lap Belts

HCPCS Code: E0978

Available in 2 and 4 Point; Central pull, push release bottom; fits hip widths 13" - 19" W



Bodypoint Aeromesh Calf Straps/Panels

HCPCS Code: E0995

Available in 4 sizes:

3.5" H and fits chairs 15" - 18" W

3.5" H and fits chairs 18" - 22" W

9" H and fits chairs 15" - 18" W

9" H and fits chairs 18" - 22" W



Invacare® Drop Base

Provides stable support base for the cushion.

Three sizes fit wheelchairs from 14" - 22" W

Cushions	Absolute	Single Density	Comfort-Mate Extra	Stabilite	Stabilite Heavy-Duty	PS Mini	PS	PS Heavy-Duty
	STANDARD	STANDARD	STANDARD	STANDARD	BARIATRIC	PEDIATRIC	STANDARD	BARIATRIC
Model	ECwd	SDwd	CMEXwd	ITSGwd	ITSGwd	PSwddd	PSwddd	PSwddd
Width	16", 18", 20"	10" - 24"	14" - 22"	14" - 20"	21" - 24"	08" - 14"	16", 18", 20"	21" - 30"
Depth	16", 18"	7" - 20"	14" - 20"	14" - 22"	16" - 22"	10", 12", 14", 16"	16", 18", 20", 22"	18" - 30"
Weight Capacity	250 lb.	250 lb.	250 lb.	250 lb.	350 lb.	150 lb.	300 lb.	600 lb.
Std. Cover	Meshtex	Meshtex	Meshtex	Meshtex	Meshtex	Startex (Reversible)	Startex (Reversible)	Startex (Reversible)
Cover Options						Kid*a*bra, Pink Lollipop, Blizzard Blue, Black Startex		
HCPCS Codes	E2601	E2601/E2602	E2603/E2604	E2605	E2606	E2605	E2605	E2606
HCPCS Codes Description	General Use Wheelchair Seat Cushion, Width Less Than 22", Any Depth	General Use Wheelchair Seat Cushion, Width Less Than 22" (E2601), Width 22" or Greater (E2602), Any Depth	Skin Protection Wheelchair Seat Cushion, Width Less Than 22" (E2603), Width 22" or Greater (E2604), Any Depth	Positioning Wheelchair Seat Cushion, Width Less Than 22", Any Depth	Positioning Wheelchair Seat Cushion, Width 22" or Greater, Any Depth	Positioning Wheelchair Seat Cushion, Width Less Than 22", Any Depth	Positioning Wheelchair Seat Cushion, Width Less Than 22", Any Depth	Positioning Wheelchair Seat Cushion, Width 22" or Greater, Any Depth
Available from	INVACARE	INVACARE	INVACARE	INVACARE	INVACARE	INVACARE	INVACARE	INVACARE
						MOTION CONCEPTS	MOTION CONCEPTS	MOTION CONCEPTS

Backs	Versair	Versair Heavy-Duty	Mini	Elite	Elite Heavy-Duty	Elite TR/ Elite SuperSoft*	Elite TR Heavy-Duty	Elite Deep
	STANDARD	BARIATRIC	PEDIATRIC	STANDARD	BARIATRIC	STANDARD	BARIATRIC	STANDARD
Model	VA1621- (-R/-T)	VA2126- (-R/-T)	MINIwwhh	PBEwwhh	PBEwwhh-HD	PBEwwhh-TR	PBEwwhh-TRHD	EDBwwhh
Width	16"-21" (adjustable)	21"-26" (adjustable)	10" - 14"	14" - 20"	21" - 24" ; 25" - 30" (Extra Wide)	15" - 20" 16", 18", 20" *	21" - 24"	14" - 20"
Height	15"-17"(R) ; 17"-19"(T)	15"-17"(R) ; 17"-19"(T)	7", 10", 12", 14"	10", 12", 14" 16", 18", 20"	16", 20"	16", 18", 20"	20"	10", 12", 14" 16", 18", 20"
Contour Depth	n/a	n/a	3"	3"	3"	3"	3"	6"
Weight Capacity	300 lb.	500 lb.	150 lb.	300 lb.	500 lb.	300 lb.	500 lb.	300 lb.
Std. Cover	Meshtex	Meshtex	Kid*a*bra	Meshtex	Meshtex	Meshtex	Meshtex	Meshtex
Cover Options			Pink Lollipop, Blizzard Blue	Slip Cover (wipeable)**		Slip Cover (wipeable)**		Slip Cover (wipeable)**
Fits onto Back Canes:	Fits 16"-21" cane widths	Fits 21"-26" cane widths	Fits up to 1" wider	Fits up to 1" wider	Fits up to 1" wider	Fits up to 1" wider	Fits up to 1" wider	Fits up to 1" wider
HCPCS Codes	E2611	E2612	E2615	E2620	E2621	E2620	E2620/E2621	E2620
HCPCS Codes Description	General Use Wheelchair Back Cushion, Width Less Than 22", Any Height, Including Any Type Mounting Hardware	General Use Wheelchair Back Cushion, Width 22" or Greater, Any Height, Including Any Type Mounting Hardware	Positioning Wheelchair Back Cushion, Posterior-Lateral, Width Less Than 22", Any Height, Including Any Type Mounting Hardware	Positioning Wheelchair Back Cushion, Planar Back with Lateral Supports, Width Less Than 22", Any Height, Including Any Type Mounting Hardware	Positioning Wheelchair Back Cushion, Planar Back with Lateral Supports, Width 22" or Greater, Any Height, Including Any Type Mounting Hardware	Positioning Wheelchair Back Cushion, Planar Back with Lateral Supports, Width Less Than 22", Any Height, Including Any Type Mounting Hardware	Positioning Wheelchair Back Cushion, Planar Back with Lateral Supports, Width Less Than 22", Any Height, Including Any Type Mounting Hardware	Positioning Wheelchair Back Cushion, Planar Back with Lateral Supports, Width Less Than 22", Any Height, Including Any Type Mounting Hardware
Available from	INVACARE	INVACARE	MOTION CONCEPTS	INVACARE	INVACARE	INVACARE	INVACARE	INVACARE
			MOTION CONCEPTS	MOTION CONCEPTS	MOTION CONCEPTS	MOTION CONCEPTS	MOTION CONCEPTS	

*This information is not intended to be, nor should it be considered billing or legal advice. Providers are responsible for determining the appropriate billing codes when submitting claims to the Medicare Program and should consult an attorney or other advisor to discuss specific situations in further detail.

PSP Mini	PSP	Flovair Gentle/Max Contour	Flovair Heavy-Duty Gentle/Max Contour	Kid*ab*ra-Vi	Vi	Vi Heavy-Duty	Libra Libra Adjust	Libra Heavy-Duty Libra Adjust Heavy-Duty
PEDIATRIC	STANDARD	STANDARD	BARIATRIC	PEDIATRIC	STANDARD	BARIATRIC	STANDARD	BARIATRIC
PSwwdd	PSwwdd	ITFGwd /ITFMwd	ITFGwd /ITFMwd	KAwwdd-Vi	MAwwdd-Vi	MAwwdd-Vi	LCwwdd	LCwwdd
10", 11", 12", 13", 14"	14", 16", 17", 18", 20"	15" - 20"	21" - 24"	12", 14"	14", 16", 17", 18", 20"	21" - 30"	14" - 20"	21" - 24"
10", 12", 14", 16"	16", 18", 20", 22"	15" - 20"	16" - 22"	12", 14"	15", 16", 17", 18", 20", 22"	18" - 30"	12", 14", 16", 18", 20", 22"	18", 20", 22"
150 lb.	300 lb.	300 lb.	500 lb.	150 lb.	300 lb.	600 lb.	300 lb.	500 lb.
Startex (Reversible)	Startex (Reversible)	Meshtex	Meshtex	Kid*a*bra	Meshtex	Meshtex	Startex	Startex
Kid*a*bra, Pink Lollipop, Blizzard Blue, Black Startex				Meshtex			Spacetex (-SP), Infection Control (-IC)*	Spacetex (-SP), Infection Control (-IC)*
PENDING	PENDING	E2607	E2608	E2607	E2607	E2608	E2624	E2625
Positioning Wheelchair Seat Cushion, Width Less Than 22", Any Depth	Positioning Wheelchair Seat Cushion, Width Less Than 22", Any Depth	Skin Protection & Positioning Wheelchair Seat Cushion, Width Less Than 22", Any Depth	Skin Protection & Positioning Wheelchair Seat Cushion, Width 22" or Greater, Any Depth	Skin Protection & Positioning Wheelchair Seat Cushion, Width Less Than 22", Any Depth	Skin Protection & Positioning Wheelchair Seat Cushion, Width Less Than 22", Any Depth	Skin Protection & Positioning Wheelchair Seat Cushion, Width 22" or Greater, Any Depth	Adjustable Skin Protection & Positioning Wheelchair Seat Cushion, Width Less Than 22", Any Depth	Adjustable Skin Protection & Positioning Wheelchair Seat Cushion, Width 22" or Greater, Any Depth
MOTION CONCEPTS	MOTION CONCEPTS	INVACARE	INVACARE	INVACARE	INVACARE	INVACARE	MOTION CONCEPTS	INVACARE
				MOTION CONCEPTS	MOTION CONCEPTS	MOTION CONCEPTS		MOTION CONCEPTS

Elite Deep Heavy-Duty	PB	PB Heavy-Duty	PB Deep	PB Deep Heavy-Duty	MX2 Fixed	MX2 Quick Release
BARIATRIC	STANDARD	BARIATRIC	STANDARD	BARIATRIC	STANDARD	STANDARD
EDBwwhh-HD	MPBwwhh	HDBwwhh	PBDwwhh	DHDwwhh	IMX2wwhh-CFH	IMX2wwhh-QRH
21" - 24"	14", 16", 17", 18", 20"	20" - 30" †	14", 16", 17", 18", 20"	20" - 30" †	14" - 18"	14" - 18"
16", 18", 20"	12", 16", 20"	16", 20"	12", 16", 20"	16", 20"	6", 9", 12", 16"	6", 9", 12", 16"
6"	5"	5"	7"	7"	3"	3"
500 lb.	300 lb.	500 lb.	300 lb.	500 lb.	250 lb.	250 lb.
Meshtex	Meshtex	Meshtex	Meshtex	Meshtex	Spacetex / Onyx Vinyl	Spacetex / Onyx Vinyl
					n/a	n/a
Fits up to 1" wider	Fits 1" narrower up to 1" wider	Fits up to 1" wider	Fits 1" narrower up to 1" wider	Fits up to 1" wider	Fits 1" narrower up to 1" wider	Fits 1" narrower up to 1" wider
E2620/E2621	E2615	E2616	E2615	E2615/E2616	E2615	E2615
Positioning Wheelchair Back Cushion, Planar Back with Lateral Supports, Width Less Than 22", Any Height, Including Any Type Mounting Hardware	Positioning Wheelchair Back Cushion, Posterior-Lateral, Width Less Than 22", Any Height, Including Any Type Mounting Hardware	Positioning Wheelchair Back Cushion, Posterior-Lateral, Width 22" or Greater, Any Height, Including Any Type Mounting Hardware	Positioning Wheelchair Back Cushion, Posterior-Lateral, Width Less Than 22", Any Height, Including Any Type Mounting Hardware	Positioning Wheelchair Back Cushion, Posterior-Lateral, Width 22" or Greater, Any Height, Including Any Type Mounting Hardware	Positioning Wheelchair Back Cushion, Posterior-Lateral, Width Less Than 22", Any Height, Including Any Type Mounting Hardware	Positioning Wheelchair Back Cushion, Posterior-Lateral, Width Less Than 22", Any Height, Including Any Type Mounting Hardware
INVACARE	INVACARE	INVACARE	INVACARE	INVACARE	MOTION CONCEPTS	MOTION CONCEPTS
MOTION CONCEPTS	MOTION CONCEPTS	MOTION CONCEPTS	MOTION CONCEPTS	MOTION CONCEPTS		

** Slip Covers available for specific back sizes. Additional surcharges apply. Please contact Motion Concepts for details.
†(21", 23", 25"-30") back widths are available as special order only. Please contact Motion Concepts for details.

For more information on Invacare Matrix
Seating Series Products visit
www.invacare.com/Matrix

Invacare Corporation
www.invacare.com

USA

One Invacare Way
Elyria, Ohio
44035-4190
(800) 333-6900

Canada

570 Matheson Blvd. E.
Unit 8
Mississauga, Ontario
L4Z 4G4 Canada
(800) 668-5324

Motion Concepts

www.motionconcepts.com
info@motionconcepts.com

USA

700 Ensminger Rd., Suite 112
Tonawanda, NY 14150
(888) 433-6818
Fax: (888) 433-6834

Canada

84 Citation Dr., Unit 1-7
Concord, ON L4K 3C1
(866) 748-7943
(905)-695-0134
Fax: 905-695-0138

© 2019

Invacare Corporation.
All rights reserved.
Trademarks are identified
by the symbols ™ and
©. All trademarks are
owned by or licensed to
Invacare Corporation unless
otherwise noted. Matrix
is a registered trademark
of Motion Concepts.
Specifications are subject
to change without
notification.
Form No. 15-219
Rev. 04/19
190419

